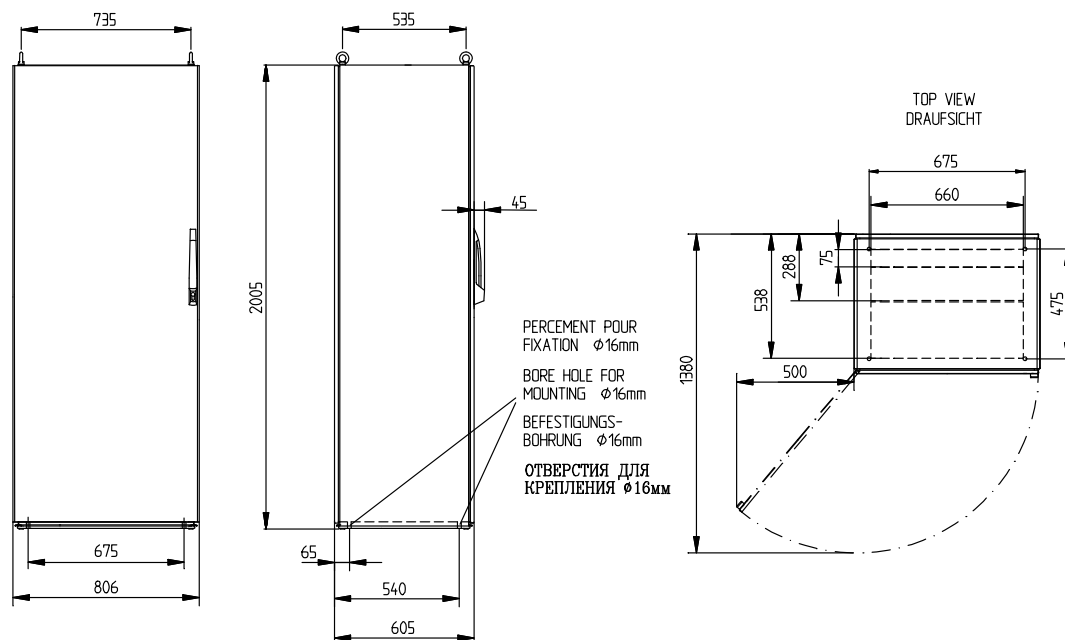


40 VS 04

Distributor Cabinet



The distributor cabinet 40 VS 04 is used for cable distribution. It consists of solid sheet-steel panels which are screwed onto a steel frame section with a seal and, optionally, can be removed. The door can be stopped on the left or the right and is provided with a safety lock on the door handle. Cable entry usually through movable bottom plates with seal. Both convectional and motor driven ventilation modules are available for cooling.

Mechanical data

• Housing	Sheet steel
• Height x width x depth	2005 mm x 806 mm x 605 mm (79" x 31 3/4" x 23 3/4")
• Curb weight	145 kg (320 lb)
• Main color	Grey (RAL 7035)
• Degree of protection	IP55 acc. to EN 60529
• Thickness of door sheet steel	2 mm (1/4")
• Thickness of side sheet steel	1.5 mm (1/4")
• Opening angle of the door	130°

INDUSTRONIC®

Industrie-Electronic GmbH & Co. KG
 Carl-Jacob-Kolb-Weg 1
 97877 Wertheim / Germany

Tel.: +49 9342 871-0
 Fax: +49 9342 871-565

info@industronic.de
 www.industronic.com