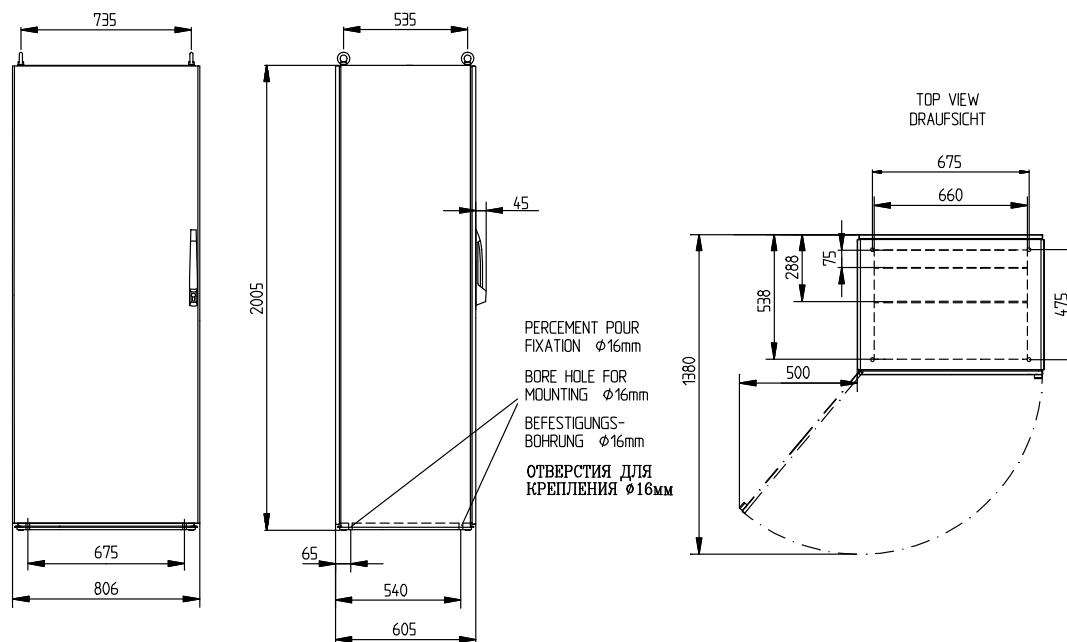


40 ZS 04

Central Exchange Cabinet



The central exchange cabinet 40 ZS 04 is used for holding the INDUSTRONIC exchange components. It consists of solid sheet-steel panels which are screwed onto a steel frame section with a seal and, optionally, can be removed. The door can be stopped on the left or the right and is provided with a safety lock on the door handle. The connections for the periphery are in the rear panel. The electronics are mounted in the 19" swivelling frame. Cable entry usually through movable bottom plates with seal. Both convectional and motor driven ventilation modules are available for cooling.

Mechanical data

| | |
|---------------------------------|-----------------------------------------------------|
| • Housing | Sheet steel |
| • Height x width x depth | 2005 mm x 806 mm x 605 mm (79" x 31 3/4" x 23 3/4") |
| • Curb weight | 155 kg (342 lb) |
| • Main color | Grey (RAL 7035) |
| • Degree of protection | IP55 acc. to EN 60529 |
| • Thickness of door sheet steel | 2 mm (1/4") |
| • Thickness of side sheet steel | 1.5 mm (1/4") |
| • Swiveling frame | 19", 40 HU |
| • Opening angle of the door | 130° |

INDUSTRONIC®

Industrie-Electronic GmbH & Co. KG
 Carl-Jacob-Kolb-Weg 1
 97877 Wertheim / Germany

Tel.: +49 9342 871-0
 Fax: +49 9342 871-565

info@industronic.de
 www.industronic.com