



10 NER 001

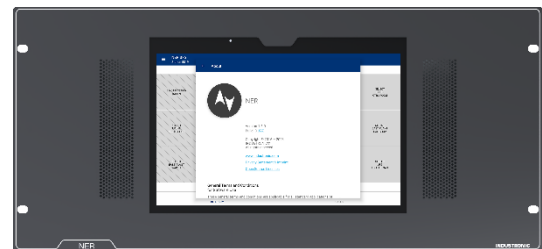
# IP ENGINEERING PANEL

## FOR RACK MOUNTING WITH INTUITIVE USER INTERFACE

The IP engineering panel is designed for use as a service intercom station in a cabinet. You can operate it via touch.

The software offers you the same features as any other INDUSTRONIC intercom station, e.g. Push-to-Talk communication, broadcasting of announcements or triggering of alarms.

In addition, the system status can be displayed flexibly and comprehensively on the engineering panel. This gives the user a detailed overview of the system and enables quick error analysis and troubleshooting.



- Color touch display
- Button layout individually configurable
- Display of detailed fault message information from the system
- Intercom communication via direct buttons
- Triggering and starting alarms or announcements
- Integrated speaker and microphone
- Audio bandwidth of up to 16 kHz
- PoE power supply

### MECHANICAL DATA

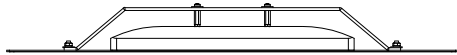
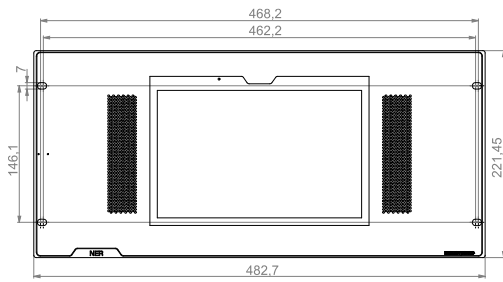
Width x height x depth	483 x 222 mm x 52 mm (19.02" x 8.74" x 2.05")
Mounting	19" slide-in chassis, 5 RU
Weight	2.3 kg (5.07 lbs)
Color	Anthracite gray (RAL 7016)

### ELECTRICAL DATA

Power supply	PoE+ according to IEEE 802.3at
Power consumption	Max. 30 W Typical 10 W



## DIMENSIONS



## NETWORK REQUIREMENTS

IPv4 network

Support of UDP, TCP, RTP and RTCP protocols

Quality of Service (QoS)

Ideal latency value: <20 ms (max. 50 ms)

Jitter: max. 10 ms

10Base-T/100Base-TX Ethernet (IEEE 802.3), 100 MBit/s recommended

200 kBit/s basic bandwidth and 200 kBit/s per active audio channel

## INTERFACES

1 x RJ45 port 100 MBit/s (LAN + PoE)

## TECHNICAL DATA TABLET

<b>Processor</b>	Rockchip Quad Core
<b>RAM</b>	4 GB
<b>Display</b>	10,1" (IPS Panel)
<b>Resolution</b>	1200 x 800 px
<b>Speaker</b>	2 x 2 W
<b>Interfaces</b>	USB, Ethernet
<b>Operating system</b>	Android®

## ACTIVATION

**Please note:** To commission the module, INDUSTRITRONIC activations are required!

Description	Type Number
ACT-IP Device Activation for the connection of one INDUSTRITRONIC IP device to the INTRON-X / INTRON-D <i>plus</i> system	101-100-002
ACT-NER Base Activation for one INDUSTRITRONIC IP intercom station of the NER series	101-200-501

## ORDER DATA

<b>Type number</b>	351-700-100
--------------------	-------------

© INDUSTRITRONIC