



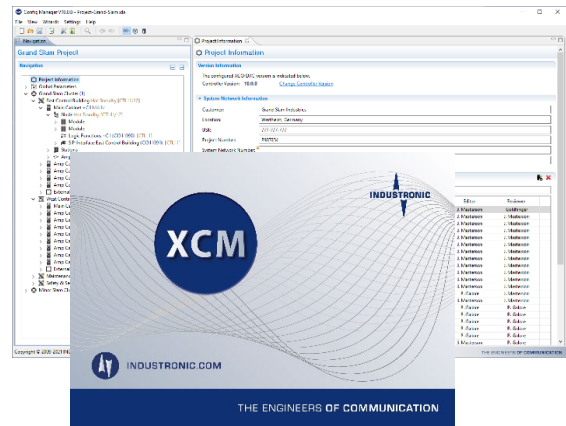
# XCM CONFIG MANAGER X

## CONFIG MANAGER FOR INTRON-X

The configuration software Config Manager X allows for the configuration of the modular IP system platform INTRON-X from INDUSTRONIC.

From basic voice connections to complex warning sequences, all functions can be configured via the intuitive user interface. The configuration can then be checked for correctness.

Any data contained in the project can be summarized and clearly arranged. The Config Manager is supplied on a USB dongle and runs only in combination with it.



- Visual representation, checking and evaluation of system configurations for INTRON-X systems from INDUSTRONIC
- Creation of complex control functions/warning sequences
- Configuration of conferences, event groups, quick dial numbers and amplifiers
- Configuration of interfaces (SIP, Modbus TCP, CANopen®, SNMP)
- Clearly structured system components
- Syntax and semantic check of all data entered
- User assistance when entering data
- User interface in German or English
- Display of all system default values

## PC CONFIGURATION AND SYSTEM REQUIREMENTS

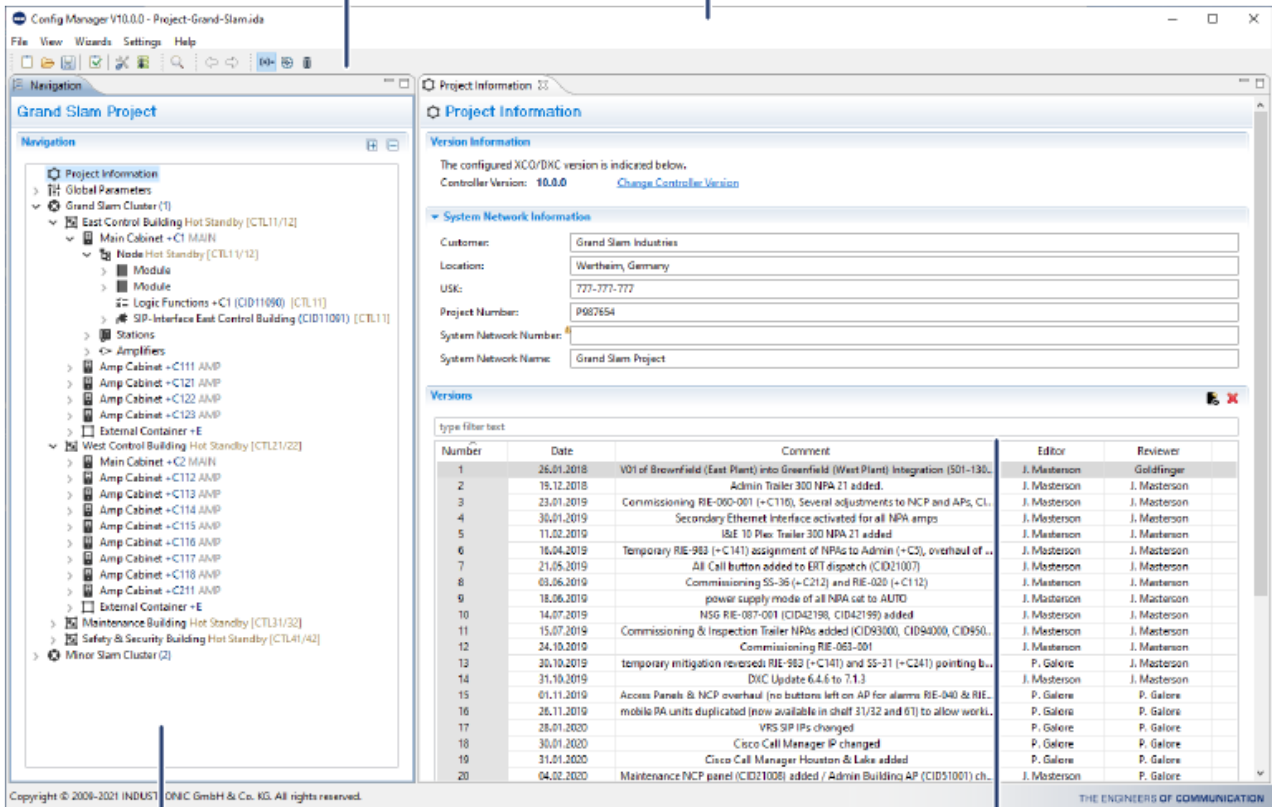
<b>Operating system</b>	Microsoft® Windows® 8/10
<b>Processor</b>	1 GHz
<b>RAM</b>	1 GB
<b>Hard disk space</b>	500 MB
<b>Screen size</b>	Min. 15", 17" recommended
<b>Screen resolution</b>	1280 x 1024 pixels
<b>Interfaces and drives</b>	USB port (USB 2.0, backward compatible to USB 1.1)

## ORDER DATA

<b>Type number</b>	100-702-300
--------------------	-------------

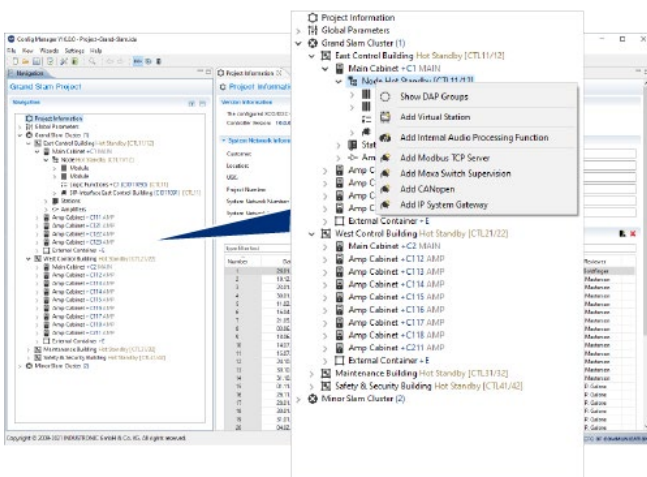
Menu Bar

Title Bar



Navigation Tree

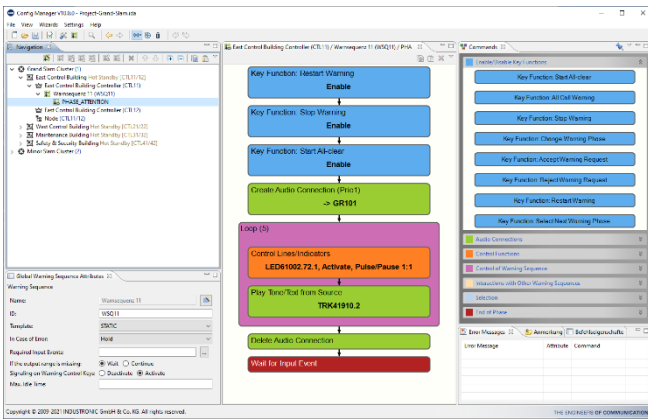
Workplace



### Clear User Interface

The user interface has a clearly structured and consistent design for intuitive user actions thus simplifying your work considerably. The entire project is arranged in a clear navigation tree, for example.

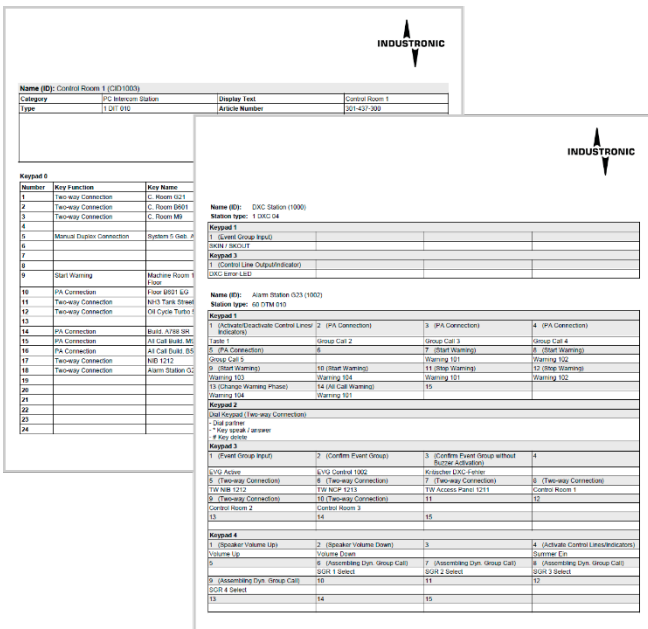
You can also customize the user interface according to your needs.



## Easily Move Objects via Drag & Drop

In many views, you can move data and interface elements via drag and drop.

With this feature, you can organize complex alarm scenarios and warning sequences. To do this, simply select a command and drag it into the workspace. When releasing the item, it is automatically positioned at the right place.



## Reports and Prints

Get an overview of your project data and configuration settings in various reports.

All reports provided can be exported in Excel, Word or PDF format and can be saved and/or printed for further use. This way, you can enclose current project data to your project documentation.

© INDUSTRICON