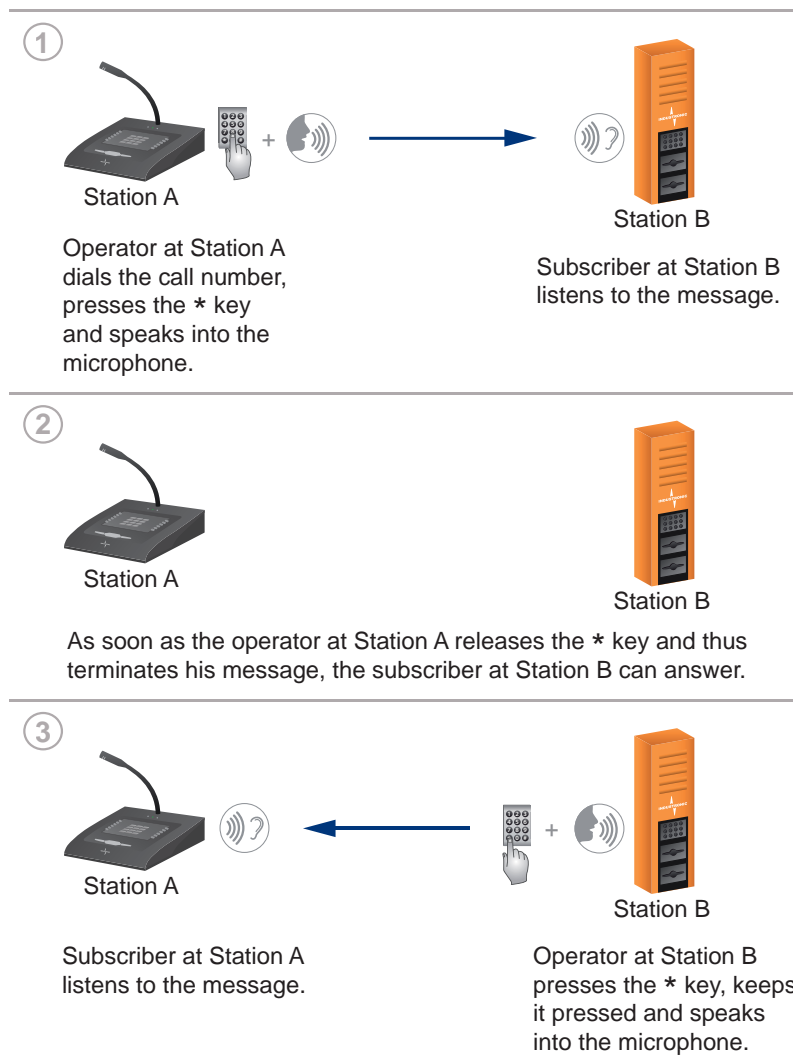


INTRON-D plus Dynamic Two-way Communication

In a Nutshell

By dialing a call number via the dial keypad, you can establish a two-way connection to any target required.

Illustration



Description

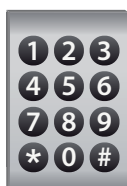
The operator at Station A dials the call number required via the dial keypad. To establish the two-way connection, he then presses the * key (Speak key), keeps it pressed and speaks into the microphone (Push-to-Talk). The subscriber at Station B listens to the message.

As soon as the operator at Station A releases the * key, the subscriber at Station B can answer. To do this, he also presses the * key on his dial keypad, keeps it pressed and speaks into the microphone. Now, the subscriber at Station A can listen to the message. So both subscribers can speak and listen alternately, but not simultaneously.

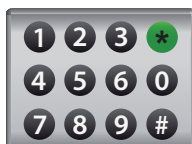
After the end of the conversation the voice connection to the last target can be established again by pressing the * key, as long as no other function is triggered or the # key (Delete key) is pressed in the meantime.

If Station B has a SmartTalk key or a direct call key configured with Station A as target, the operator can also use these keys to answer.

Dial Keypad of Desktop Intercom Stations



Dial Keypad of Explosion-proof and Weather-proof Outdoor Intercom Stations



Key	Description
0 to 9	To dial the call number required.
* / *	To establish the voice connection (Speak key).
#	To delete the call number entered or to cancel the dialing (Delete key).

Application Examples

Dynamic two-way communication via dial keypad is used to establish voice connections to any, freely selectable target. The called subscriber can answer at any time. Furthermore, when using a dial keypad, keys can be saved as no direct call key needs to be configured for each target that can be reached. This way, the intercom station remains clearly arranged and user-friendly.

Intercom stations with dial keypad are often used in steel mills as there are many different subscribers who need to be called. To avoid the configuration of direct call keys a dial keypad is installed into the corresponding intercom stations. This way, you can flexibly select the target by dialing the corresponding call number.

Customer Benefits

- Establish voice connections to any target (all intercom stations can speak to each other)
- Exclusive voice connections between two intercom stations (no other subscriber can listen)
- Compact intercom station as intercom station keys can be saved - no direct call key for each voice connection required.
- No acoustic feedback in noisy areas and if no handset is available

Technical Details

To establish a dynamic two-way communication, you require at least 1 intercom station (any type possible) with dial keypad. Furthermore, you require at least 1 target or more that can be reached (e.g. other intercom stations).

The called subscriber can answer at his intercom station by pressing the following keys:

- SmartTalk key
- Direct call key
- * key (Speak key)

Within a communication system dynamic two-way connections often have a lower priority. This means that they can be interrupted by voice connections or functions with higher priorities.

Related Functions

- Direct two-way communication
- Call storage
- SmartTalk
- Parallel group
- MultiControl group

INDUSTRONIC®
 Industrie-Electronic GmbH & Co. KG
 Carl-Jacob-Kolb-Weg 1
 97877 Wertheim / Germany

Tel: +49 9342 871-0
 Fax: +49 9342 871-565

info@industronic.de
 www.industronic.de