



CWB – ATEX 60V

EX FLASHING WARNING BEACON

FOR USE IN EX ZONES 1, 2, 21 AND 22

The Ex flashing warning beacon is used to visually indicate alarm signals as well as incoming calls at intercom stations in explosive environments. It can directly be controlled by the INDUSTRONIC system or an intercom station.

The robust beacon can be installed both indoors and outdoors.



- Universal application possibilities
- Suited for gas explosive environments and areas with combustible dusts
- Degree of protection IP66
- Aluminum housing resistant to corrosion and seawater
- Flash energy 5 Joule

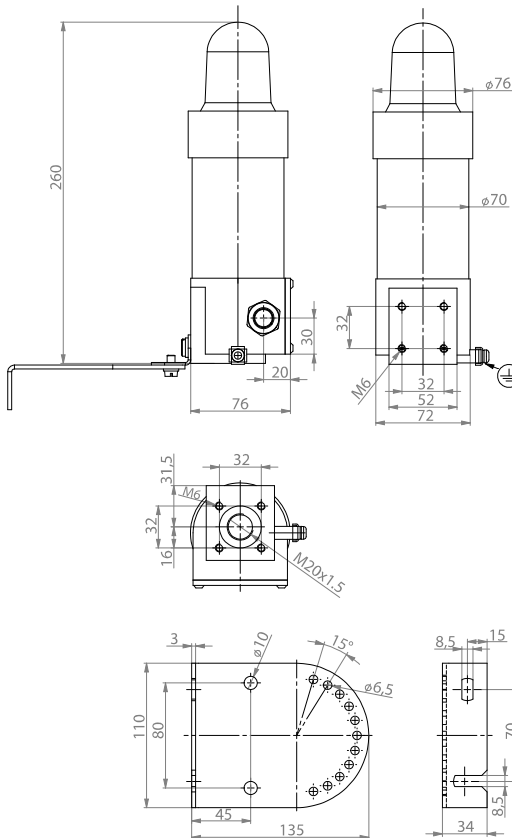
MECHANICAL DATA

Housing material	Aluminum (powder-coated)
Lens material	Polycarbonate (PC)
Ceiling and wall-mounting bracket	Stainless steel
Width x height flashing warning beacon	76 mm x 260 mm (2.99" x 10.24")
Width x length wall-mounting bracket	110 mm x 135 mm (4.33" x 5.31")
Cable gland	M20 x 1.5 and M20 x 1.5 blind
Connection	Screw terminals
Clamping range	2 x 4 mm ² (solid), 2 x 2.5 mm ² (flexible)
Weight	Approx. 2 kg (approx. 4.41 lbs)
Lens colors	Yellow, Red, Orange, Green (other colors upon request)

ELECTRICAL DATA

Operating voltage range	54 V DC to 80 V DC
Current consumption	125 mA
Flash energy	5 Joule
Flash rate	1 Hz
Service life	6 x 10 ⁶ flashes

DIMENSIONS



ENVIRONMENTAL REQUIREMENTS AND STANDARDS

Ambient temperature during operation	T6: -40 °C to +40 °C (-4 °F to +104 °F) T5: -40 °C to +50 °C (-4 °F to +122 °F)
Protection class	Class I
Degree of protection	IP66
Gas explosion protection zones 1 and 2	II 2G Ex d e IIC T6 Gb Ta < +40 °C (+104 °F) II 2G Ex d e IIC T5 Gb Ta < +50 °C (+122 °F)
Dust explosion protection zones 21 and 22	II 2D Ex tb IIIC T85 °C Db Ta < +40 °C (+104 °F) II 2D Ex tb IIIC T100 °C Db Ta < +50 °C (+122 °F)
Certificate	EPS 20 ATEX 1222 X

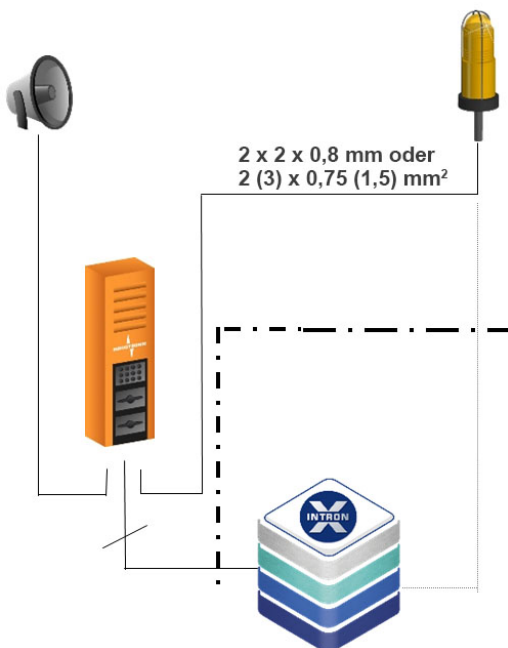
ACCESSORY

Description	Type Number
Protective cage for CWB-ATEX	070-500-008

TYPE OVERVIEW

Lens Color	Type	Type Number
Yellow	CWB-ATEX 60V/YE	070-000-112/YE
Red	CWB-ATEX 60V/RD	070-000-112/RD
Orange	CWB-ATEX 60V/OG	070-000-112/OG
Green	CWB-ATEX 60V/GN	070-000-112/GN

APPLICATION



Call Signaling at Intercom Stations

The flashing warning beacon starts to flash, as soon as the intercom station receives a call. The signaling stops, as soon as the incoming call has been accepted or the pre-programmed time has elapsed.

Alarm Signaling

The flashing warning beacon is activated for the duration of the alarm. It can either be connected directly to the system or an intercom station in order to control the beacon from there.

© INDUSTRISTRONIC